

CONTINUING EDUCATION PROGRAM



TUV Colegio
VZ 
INNOVANDO HACIA EL FUTURO

2022
CONVENTION

18 - 21
AUGUST
Wyndham Grand
Rio Grande, P.R.

CONTINUING EDUCATION PROGRAM



AUGUST | 18 - 21 | 2022

Wyndham Grand Rio Mar

Puerto Rico Golf & Beach Resort

CONTINUING EDUCATION DIVISION

Colegio de Farmacéuticos de Puerto Rico
(787) 753-7157 • (787) 754-8649

Milagros Morales, R.Ph.
Executive Director

Elivette Díaz
Associate Director
Communications and Continuing Education



“The Colegio de Farmacéuticos de Puerto Rico is accredited by the Accreditation Council for Pharmacy Education as a provider of continuing pharmacy education.”

Provider Number: 0151

*Programa sujeto a cambios.

GENERAL INFORMATION

Conference Pre-registration

Puerto Rico

Pharmacy Board Provider: 00076

ACPE Provider: 0151

To pre-register for the continuing education of the 2022 Convention, access the following website <https://cfpr.org/conventions.cfm> Choose the educations you will attend. Make the payment through the page to be registered. Online pre-registration will be accepted until the maximum capacity per room is reached.

You can also pre-register in the following ways:

1. Personally, visiting our offices
2. By mail, you must call 787-753-7157 to obtain the registration application, fill it out and mail it before **August 8, 2022** to:

Colegio de Farmacéuticos de Puerto Rico

Continuing Education Division

PO Box 360206

San Juan, PR 00936-0206

We will be accepting pre-registrations in our offices until **August 8, 2022** (subject to availability of requested course). We will use the postmark date of your pre-registration as evidence. Pre-registrations received by mail postmarked on or before **Monday, August 8** will be processed.

All registrations will be processed in the order received. Pre-registration priority order is as follows: online payments will be accepted first; mailed pre-registrations will be accepted second; in third place are pre-registrations done in person.

Conferences pre-registration received without payment will not be accepted. After receiving your pre-registration, you will receive a confirmation of the courses in which you have been properly registered. If you send your pre-registration coupon by email, confirm or verify with our offices to make sure it has been received. To avoid duplicates, do not re-send registrations by mail.

PAYMENT

You can make your payment by check or money order payable to the Colegio de Farmacéuticos de Puerto Rico. In addition, you can book by credit card, internet or in person by cash or ATH.

If you currently have any debt (license, returned checks or other) with the Colegio de Farmacéuticos, it must be paid in full prior to your pre-registration.

All returned checks will have a \$15.00 fee and must be paid by certified check or cash.

CPE CLASSIFICATIONS

Continuing Education Program Colegio de Farmacéuticos de Puerto Rico

A. Type of Activity:

Knowledge: These CPE activities are primarily constructed to transmit knowledge (i.e., facts). The facts must be based on evidence as accepted in the literature by the health care professions.

Application: These CPE activities are primarily constructed to apply the information learned in the time frame allotted. The information must be based on evidence as accepted in the literature by the health care professions.

Practice: [Previously named Certificate Programs in Pharmacy] These CPE activities are primarily constructed to instill, expand, or enhance practice competencies through the systematic achievement of specified knowledge, skills, attitudes, and performance behaviors. The information within the practice-based CEP activity must be based on evidence as accepted in the literature by the health care professions. The formats of these CPE activities should include a didactic component (live and/or home study) and practice experience component (designed to evaluate the skill or application).

The provider should employ an instructional design that is rational sequenced, curricular based, and supportive of achievement of the stated professional competencies.

B. Level of Knowledge/Experience

CPE activities are further classified in terms of level of knowledge or the experience. CPE activities are classified in the following levels corresponding to knowledge or experience:

Level 1. Does not require previous knowledge of the topic.

The information being presented is introductory.

Level 2. Requires that the participants have some basic knowledge of the content but experience is not necessary. The information presented will be of intermediate level.

Level 3. Requires broad knowledge and experience of the topic/content. The information presented is directed to broaden the expertise. The faculty will deliver the information using advanced and complex information or primary literature to discuss the content. Not all practitioners will be able to understand the contents.

C. Type or Practice:

Type of practice that applies to the continuing education and the professional categories:

Pharmacists in general
Industry Pharmacists
Manager Pharmacists
(Pharmacist in Administration)
Community Pharmacists
Institutional Pharmacists
(Pharmacist in Hospital, Clinics, Health Centers, Nursing Homes, etc.)
Pharmacy Technicians

D. Description of Course:

Description of the teaching strategy used in the program to help get the participant prepared.
For example: Workshop, Panel, Case Discussion, Conferences, Group Dynamics, etc.

E. Duration, date and time of educational activities:

Activities are 1, 2, 2.5 or 3 hours duration, therefore, schedule varied in terms of starting and ending time.
Registration will be starting one (1) hour prior of each continuing education activity. No participants will be allowed to enter the room 10 to 30 minutes after the conference has started depending on duration.

CANCELLATIONS (Conference Pre-registration)

There will be no cash refund when cancelling your registration; credit will be awarded for use in future continuing educations. For this, you must submit written justification indicating the reason why you were not able to attend the conferences and evidence, if required.

Cancellations or changes must be made on or before **Monday, August 8, 2022** for an 80% refund of the total amount paid. The remaining 20% will be used for clerical expenses. After **Monday, August 8, 2022** no refund requests will be accepted for NOT attending educational activities

GENERAL RULES

CONTINUING EDUCATION PROGRAM (CPE)

- The Colegio de Farmacéuticos reserves the right to cancel any educational activity if the minimum capacity (35 people) is not met in order to offer them.
- All participants must go through the registration desk to validate their attendance. The conferences will start on time as per schedule.
- Photo ID is required at conference entrance. No participants will be allowed to enter the room 10 to 30 minutes after the conference has started depending on conference duration.
- The participant must be present until the end of the conference.
- Faculty conflict of interest disclosure must be conveyed to the participants before starting each conference.
- With the purpose of making improvements or changes to the continuing education program it is important for participants to fill out the evaluation at www.cfpr.org.
- In case of an emergency the day of the activity that makes it impossible to attend, the conference will not be accredited and the aforementioned cancellation rules apply.
- The activities are paperless, therefore the materials and continuing education certificates will be provided in digital format.
- Companions or children are not allowed in the conference room.
- Cell Phone calls are not allowed in the conference room.
- Certificates for continuing education activities accredited by the Accreditation Council for Pharmacy Education (ACPE) may be accessed through the Colegio de Farmacéuticos de Puerto Rico CPE Monitor at the following web site: www.cfpr.org where you should enter the education access code provided at the activity.
- Certificates will be available in your account at www.cfpr.org once you complete the online evaluation and pass the online test.
- Regarding workshops, no partial credits will be awarded; the participant must attend both sessions and the total allotted time.
- Alcoholic beverages will not be allowed during the educational activities.
- Video or audio recording is not allowed.
- Virtual Conference: The participant must be connected for the duration of conference.

ATTENTION TO:

PHARMACISTS AND PHARMACY TECHNICIANS IT IS MANDATORY TO CREATE NABP E-PROFILE ACCOUNT



Access www.nabp.pharmacy to create your NABP E-Profile account and at www.cfpr.org where all your ACPE accredited continuing education hours will be reflected.

The Accreditation Council for Pharmacy Education (ACPE) requires Pharmacists and Pharmacy Technicians to register a NABP E-Profile user account at www.nabp.pharmacy where you will receive a NABP number. You should include this number on your CPE Monitor profile with the Colegio de Farmacéuticos at the following electronic address: www.cfpr.org, thus, your credits will be reflected on the NABP platform. Through this platform, you will benefit from having access to your personal continuing education records accredited by ACPE.

Each time you take ACPE accredited continuing education courses/ activities you are required to access: www.cfpr.org where you will complete the corresponding pre/posttest and your credits will be reflected on NABP's electronic platform. **To register your credits of the continuing educations should be access the CPE Monitor not later than (45) days of completion of the activity. The CPE Monitor and E- NABP profile instructions will be provided at the convention.** We appreciate your cooperation in compliance with these mandatory requirements that make part of the agreements.

How to operate a Medication Therapy Management (MTM) service during a pandemic*

Date: Thursday, August 18, 2022

Time: 8:30 AM - 11:30 AM

Type of Activity: Knowledge Level: 1

Contact Hours: 3 CSU's: 0.3

ACPE Code: 0151-0000-22-014-L04- P/T

Audience: Pharmacists and Pharmacy Technicians


Capacity: 250

Room: Rio Mar Ballroom

Faculty: Carlos Ocasio del Valle, Pharm.D.

At the end of the CPE activity the participants will be able to:

1. Identify and assess opportunities of improvement in the workflow to integrate MTM services.
2. Explain the general terminology used in regards of MTM service.
3. Discuss different strategies to increase MTM interventions and how to implement these during the pandemic.
4. Describe the positive administrative and economic impact when performing MTM service.
5. Value the importance of the pharmacy team (pharmacist and pharmacy technicians) on enhancing the MTM service in the pharmacy setting.

 *Virtual session available for this continuing education.

Updates in the management of Depression

Date: Thursday, August 18, 2022

Time: 9:00 AM - 11:00 AM

Type of Activity: Knowledge Level: 1

Contact Hours: 2.0 CSU's: 0.2

ACPE Code: 0151-0000-22-022-L05-P

Audience: Pharmacists

Capacity: 75

Room: Rio Mar

Faculty: José García Toledo, Pharm.D.

At the end of the CPE activity the participants will be able to:

1. Describe the prevalence and comorbidities associated with depression.
2. List major risk factors for depression.
3. Describe common non-pharmacological interventions and state their role in the management of depression.
4. Compare the safety and efficacy of different antidepressant medication.
5. Value the role of the pharmacist in patient education and in the management of depression.

Update in Drugs for Dyslipidemia Management

Date:	Thursday, August 18, 2022	
Time:	8:30 AM - 11:00 AM	
Type of Activity:	Knowledge	Level: 1
Contact Hours:	2.5	CSU's: 0.25
ACPE Code:	0151-0000-22-011-L01- P	
Audience:	Pharmacists	
Capacity:	75	
Room:	Rio Mar	
Faculty:	Rodney Colón, Pharm.D., BCPS Clinical Assistant Professor - NSU	

At the end of the CPE activity the participants will be able to:

1. Discuss American Heart Association/American College of Cardiology (AHA/ACC) guideline recommendations for the treatment of patients with dyslipidemia.
2. List key risk factors for patients needing further LDL-C lowering.
3. Compare the medications used to lower lipids in terms of the mechanism of action, efficacy, and safety.
4. Present new drug approved by the FDA for hypercholesterolemia and their role in current practice.
5. Describe the pharmacist role in dyslipidemia management.

Immunization Update 2022

Date:	Thursday, August 18, 2022	
Time:	9:00 AM - 11:00 AM	
Type of Activity:	Knowledge	Level: 1
Contact Hours:	2	CSU's: 0.2
ACPE Code:	0151-0000-22-012-L06- P/PT	
Audience:	Pharmacists and Pharmacy Technicians	
Capacity:	125	
Room:	Caribbean 1	
Faculty:	Blanca Ortiz, Pharm.D. Assistant Dean - NSU Frances Colón, Pharm.D. Clinical Assistant Professor - NSU	

At the end of the CPE activity the participants will be able to:


1. Discuss the 2022 immunization schedules recommended by CDC.
2. List major changes on the 2022 immunization schedules for adults and children.
3. Present newly available information regarding current and emerging vaccines.
4. Value the role of the pharmacy workforce in immunization efforts.

Specialty Pharmacy Best Practices: An opportunity for interprofessional collaboration* (Panel)

Date:	Thursday, August 18, 2022
Time:	2:00 PM - 4:30 PM
Type of Activity:	Knowledge Level: 1
Contact Hours:	2.5 CSU's: 0.2.5
ACPE Code:	0151-0000-22-018-L04- P/T
Audience:	Pharmacists and Pharmacy Technicians
Capacity:	250
Room:	Rio Mar Ballroom

At the end of the CPE activity the participants will be able to:

1. Describe specialty pharmacy scope of practice.
2. Discuss best practices of specialty pharmacy operations and documentation.
3. Identify opportunities for interprofessional collaboration within the practice of specialty pharmacy.
4. Value interprofessional collaboration of the pharmacy workforce.

 *Virtual session available for this continuing education.

Pharmacy protocol in emergency and disasters

Date:	Thursday, August 18, 2022
Time:	2:00 PM - 4:00 PM
Type of Activity:	Knowledge Level: 1
Contact Hours:	2 CSU's: 0.2
ACPE Code:	0151-0000-22-019-L99- P/T
Audience:	Pharmacists and Pharmacy Technicians
Capacity:	125
Room:	Caribbean 1
Faculty:	Dra. Nelly Conte Schmidt, EdD, MBA, RPh, BSPH

At the end of the CPE activity the participants will be able to:

1. Explain the pharmacy and pharmacist workforce roles in emergencies and disasters.
2. Describe the need for a protocol in the health professional's practice sites.
3. List the parts that must be included in a pharmacy protocol.
4. Describe the process of designing, implementing, assessing and monitoring of the protocol.
5. Given an example, evaluate a pharmacy protocol, its strengths, and pitfalls.
6. Value the importance of having a protocol in case of emergencies and disasters.

Antidiabetic Medications impact multiple systems

Date:	Thursday, August 18, 2022	
Time:	2:00 PM - 4:30 PM	
Type of Activity:	Knowledge	Level: 1
Contact Hours:	2.5	CSU's: 0.2.5
ACPE Code:	0151-0000-22-013-L99-P	
Audience:	Pharmacists	
Capacity:	75	
Room:	Rio Mar	
Faculty:	Frances Colón, Pharm.D. Clinical Assistant Professor - NSU	

At the end of the CPE activity the participants will be able to:

1. Compare the different classes of antidiabetic medications in terms of mechanism of action and clinical effects.
2. Discuss the cardiovascular-renal-metabolic connections.
3. Identify the antidiabetic medications with cardiovascular, renal and weight benefits.
4. Explain changes to recent national guidelines that affect the care of patients with type 2 diabetes.
5. Describe a treatment plan to reduce cardiovascular and chronic kidney disease risk in persons with type 2 diabetes.

Health complications related to environmental contamination

Date:	Thursday, August 18, 2022	
Time:	2:00 PM - 4:00 PM	
Type of Activity:	Knowledge	Level: 1
Contact Hours:	2.0	CSU's: 0.2
ACPE Code:	0151-0000-22-035-L04-P/T	
Audience:	Pharmacists and Pharmacy Technicians	
Capacity:	75	
Room:	Rio Mar	
Faculty:	Edanai Vélez, Pharm.D., BCGP, BS	

At the end of the CPE activity the participants will be able to:

1. Explain how contamination affects human health.
2. Discuss the medical complications related to environmental the contamination.
3. Identify alternatives that help advance solutions.

Clinical and Manufacturing Aspects of Biotechnology and Biosimilar Products: Are they Interchangeable?*

(Panel)

Date: Friday, August 19, 2022
 Time: 8:30 AM - 11:30 AM
 Type of Activity: Knowledge Level: 1
 Contact Hours: 3.0 CSU's: 0.3
 ACPE Code: 0151-0000-22-020-L01-P/T
 Audience: Pharmacists and Pharmacy Technicians
 Capacity: 250
 Room: Rio Mar Ballroom
 Faculty: **Moderator:** Danister Quiñones, PhD, RPh
Panelists: Paul Fox, PhD
 Wanda Maldonado, Pharm.D.
 Néstor Ortiz de Hoyos, RPh, JD

At the end of the CPE activity the participants will be able to:

1. Recognize the etiology, pathophysiology, and treatment options of autoimmune diseases.
2. Define the similarities and differences between chemical and biological synthesis of active pharmaceutical molecules.
3. Mention the phases of the manufacturing process for a biotechnology product.
4. Describe the process of cell culture, harvest and purification of biotechnology products.
5. Describe the clinical similarities and differences between biotechnology and biosimilar products.
6. Describe the clinical studies to qualify a biosimilar product for interchangeability.
7. List the legal requirements for interchangeability of a biosimilar product in Puerto Rico.

*Virtual session available for this continuing education.

Medicaid in Puerto Rico: Evolution of the Pharmacy Program

Date: Friday, August 19, 2022
 Time: 9:00 AM - 11:00 AM
 Type of Activity: Knowledge Level: 1
 Contact Hours: 2.0 CSU's: 0.2
 ACPE Code: 0151-0000-22-035-L99 P/T
 Audience: Pharmacists and Pharmacy Technicians
 Capacity: 75
 Room: Rio Mar
 Faculty: Edna Marín Ramos, MA
 ASES Executive Director
 Adriana Ramírez, Esq. COO Abarca Health

At the end of the CPE activity the participants will be able to:

1. Discuss differences in US Medicaid and PR Medicaid.
2. Identify exclusions and optional services in PR Vital Program.
3. Describe Medicaid Drug Rebate Program.
4. Explain Disease Management Program under Plan Vital.

Lifestyle Modifications, Nutrition and Supplements; a Holistic Approach to heal our patients

Date: Friday, August 19, 2022
 Time: 9:00 AM - 11:00 AM
 Type of Activity: Knowledge Level: 1
 Contact Hours: 2.0 CSU's: 0.2
 ACPE Code: 0151-0000-22-016-L04-P/T
 Audience: Pharmacists and
Pharmacy Technicians
 Capacity: 125
 Room: Caribbean 1
 Faculty: Nimia I. Vázquez, RPh

At the end of the CPE activity the participants will be able to:

1. Define the role of a holistic nutritional intervention in patients with chronic diseases.
2. Identify key opportunities for assessment of nutrition and lifestyle status and provide recommendations.
3. Discuss the reasons for supplementation.
4. Review the top four nutrients that would be most beneficial to the patients.
5. Discuss other supplements/ vitamins that would be beneficial for patients' health.
6. Review patient's profile to identify the most common drug induced nutrient depletion and make recommendations.
7. Develop a strategy to talk to the patients.

Cybersecurity in pharmacy practice: prepare yourself to avoid hackers

Date: Friday, August 19, 2022
 Time: 9:00 AM - 11:00 AM
 Type of Activity: Knowledge Level: 1
 Contact Hours: 2 CSU's: 0.2
 ACPE Code: 0151-0000-22-017-L99- P/T
 Audience: Pharmacists and
Pharmacy Technicians
 Capacity: 90
 Room: Caribbean 2

At the end of the CPE activity the participants will be able to:

1. Discuss the current threat landscape.
2. Identify the weaknesses in IT infrastructure.
3. Outline how to strengthen your cybersecurity.

The Role of the Pharmacist in the Care of Patients with chronic kidney disease (CKD)

Date:	Friday, August 19, 2022
Time:	2:00 PM - 4:00 PM
Type of Activity:	Knowledge Level: 1
Contact Hours:	2.0 CSU's: 0.2
ACPE Code:	0151-0000-22-015-L99-P
Audience:	Pharmacists
Capacity:	75
Room:	Rio Mar
Faculty:	Yarelis Alvarado, Pharm.D., BCCCP, BCPS Assistant Professor - NSU

At the end of the CPE activity the participants will be able to:

1. Discuss the epidemiology, pathophysiology, clinical manifestations, and complications of CKD.
2. Describe the management of CKD patients according to the stage of kidney disease.
3. List strategies to reduce or prevent progression of CKD.
4. Identify potential medication related problems when a patient with CKD presents anemia, MBDs, electrolyte abnormalities, CV complications, and vitamin irregularities.
5. Value the role of the pharmacists in the management of patients with chronic kidney disease.

Everything you need to know to effectively manage your Medicare Advantage

Date:	Friday, August 19, 2022
Time:	1:30 PM - 4:00 PM
Type of Activity:	Knowledge Level: 1
Contact Hours:	2.5 CSU's: 0.25
ACPE Code:	0151-0000-22-029-L99-P/T
Audience:	Pharmacists and Pharmacy Technicians
Capacity:	125
Room:	Caribbean 1
Faculty:	Sara Ramos González, Pharm.D. Amairy Plaud, Pharm.D. Nilda González, MPH, HIA, CHC, MHP, HCSA

At the end of the CPE activity the participants will be able to:

1. Describe the health policy process of Medicare Advantage and how pharmacists can get involved.
2. Describe Medicare Part D and discuss its effects on pharmacies.
3. Discuss the benefit designs and formularies require by Medicare Quality and Stars Rating.
4. Identify the Quality and Stars Rating and How the Pharmacy can impact these metrics.
5. Explain the regulatory aspects established by CMS in Coverage Determination Process.
6. Explain the Part D Senior Saving Model.

Pharmacist Supporting Patients in Self-Care and Self-Medication

Date:	Friday, August 19, 2022
Time:	2:00 PM - 4:00 PM
Type of Activity:	Knowledge Level: 1
Contact Hours:	2.0 CSU's: 0.2
ACPE Code:	0151-0000-22-023-L05-P/T
Audience:	Pharmacists and Pharmacy Technicians
Capacity:	75
Room:	Rio Mar
Faculty:	Denise Figueroa Ríos, Pharm.D. Assistant Professor Department of Pharmacy Practice UPR - RCM

At the end of the CPE activity the participants will be able to:

1. Discuss guidance for safe selection of nonprescription medication and nonpharmacologic interventions for patients with self-managed conditions.
2. Appropriately consult patients on proper dosage and side effects of oral OTC medications.
3. Identify appropriate oral over-the-counter medications for self-treatable conditions including pediatric, geriatric, pregnant and lactating patients.
4. Apply recent literature in the decision-making process for evaluating candidacy for self-care and selecting appropriate nonprescription products for patient.
5. Discuss the role of the pharmacy staff in accessing OTC products that are effective and safe.

Burnout in our profession?*

Date:	Friday, August 19, 2022
Time:	2:00 PM - 4:30 PM
Type of Activity:	Knowledge Level: 1
Contact Hours:	2.5 CSU's: 0.25
ACPE Code:	0151-0000-22-024-L99-P/T
Audience:	Pharmacists and Pharmacy Technicians
Capacity:	150
Room:	Rio Mar Ballroom

At the end of the CPE activity the participants will be able to:

1. Define the signs and symptoms of burnout and understand the difference of burnout versus stress.
2. Identify symptoms of professional burnout, including the influence of burnout on professional practice and patient safety.
3. Describe mechanisms for dealing with and reframing how you and your team look at those functions that are causing burnout.
4. Identify ways to re-evaluate goals and incorporate de-stressing and burnout reduction tactics, improve, and recover from burnout, and lead a healthier lifestyle.
5. Describe strategies, including mindfulness and meditation, that can improve clinician well-being.
6. Evaluate workplace practices and challenges contributing to or mitigating burnout symptoms.

*Virtual session available for this continuing education.

Update in Pharmacy Laws

Date:	Saturday, August 20, 2022	
Time:	9:30 AM - 11:00 AM and 2:00 PM - 3:30 PM	
Type of Activity:	Knowledge	Level: 1
Contact Hours:	3.0	CSU's: 0.3
ACPE Code:	0151-0000-22-025-L03-P/T	
Audience:	Pharmacists and Pharmacy Technicians	
Capacity:	200	
Room:	Rio Mar	Ballroom
Faculty:	Néstor Ortíz, RPh, JD	

At the end of the CPE activity the participants will be able to:

1. Describe the amendments made in Puerto Rico Pharmacy Law in recent years.
2. Discuss new regulations that impact pharmacy practice.
3. Recognize the most important sections of the Puerto Rico Pharmacy Law.
4. Explain the most recent amendments to Pharmacy Law.

NOTE: Two part education

Part 1: 9:30 AM - 11:00 AM

Part 2: 2:00 PM - 3:30 PM

 **Must attend both parts to obtain continuing education credits.**

 **Required by Puerto Rico Board of Pharmacy.**

Clinical Pearls: Pharmacists commitment in antimicrobial and opioid stewardship programs

Date:	Saturday, August 20, 2022	
Time:	9:00 AM - 11:00 AM	
Type of Activity:	Knowledge	Level: 1
Contact Hours:	2.0	CSU's: 0.2
ACPE Code:	0151-0000-22-026-L99-P	
Audience:	Pharmacists	
Capacity:	100	
Room:	Caribbean 1	
Faculty:	Zaritza Cajigas, Pharm.D. Suasy Acevedo, Pharm.D.	

At the end of the CPE activity the participants will be able to:

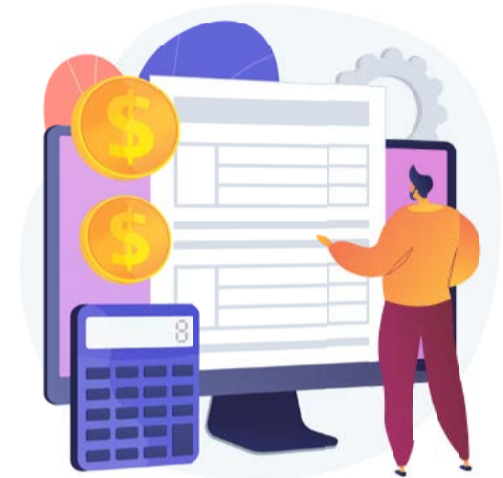
1. Describe the functions and responsibilities of pharmacists in antimicrobial stewardship programs.
2. Identify potentially inappropriate antibiotic prescriptions.
3. Discuss COVID-19 prevention, screening, and treatment in the ambulatory setting.
4. List strategies that can be implemented by a pharmacist to help mitigate the opioid crisis.

How to reduce patient's risks? Pearls in medication safety

Date:	Saturday, August 20, 2022
Time:	2:00 PM - 4:00 PM
Type of Activity:	Knowledge Level: 1
Contact Hours:	2.0 CSU's: 0.2
ACPE Code:	0151-0000-22-027-L99-P/T
Audience:	Pharmacists and Pharmacy Technicians
Capacity:	100
Room:	Caribbean 1
Faculty:	Lucía García, Pharm.D., BCPG, CDP Jennette Mejías, Pharm.D.

At the end of the CPE activity the participants will be able to:

1. Identify strategies to ensure appropriate and safe use of medications in the elderly.
2. Identify strategies pharmacists can implement to optimize use of proton pump inhibitors (PPIs).
3. Describe the potential of depression and suicide that present common medications.
4. Discuss emerging and potentially problems with the use and misuse of gabapentin.
5. Identify pharmacy technicians' contributions identifying potentially inappropriate use of medications and ensuring appropriate medication concentration.
6. Value the role of the pharmacy team, pharmacists, and pharmacy technicians in ensuring medication safety.



Pre Registro

Selecciona los cursos
de Educación continua
Sigue estos pasos:

- 1 Accesa:
<https://cfpr.org/conventions.cfm>
- 2 Selecciona los cursos por tema y día
- 3 Realiza el pago
- 4 Recibirás una notificación confirmando los cursos seleccionados

SCAN

